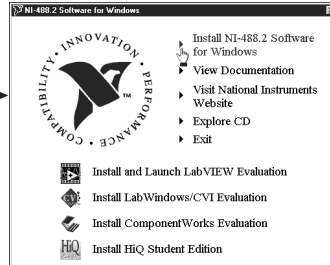


# GETTING STARTED

## PCI-8212 for Windows 95

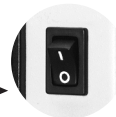
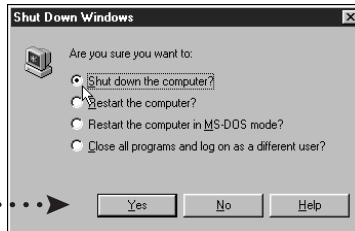
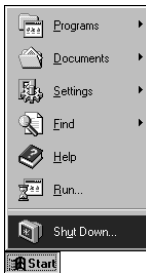
# 1

Insert the NI-488.2 CD, then choose **Install NI-488.2 Software for Windows**.



# 2

Shut down, then power off computer.



Power Off Computer

# 3

Install hardware\* and cables, then power on computer.



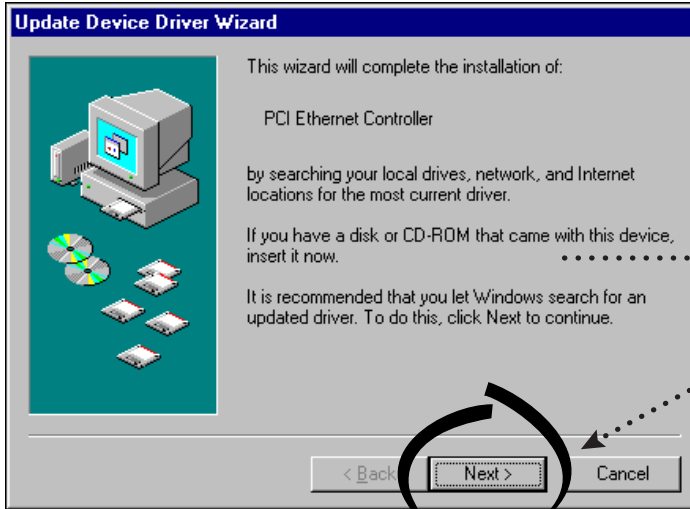
Power On Computer

\* **For Help** installing your hardware, refer to the *PCI-GPIB* topic in the *GPIB Hardware Guide* (available on the NI-488.2 for Windows CD through *View Documentation*).

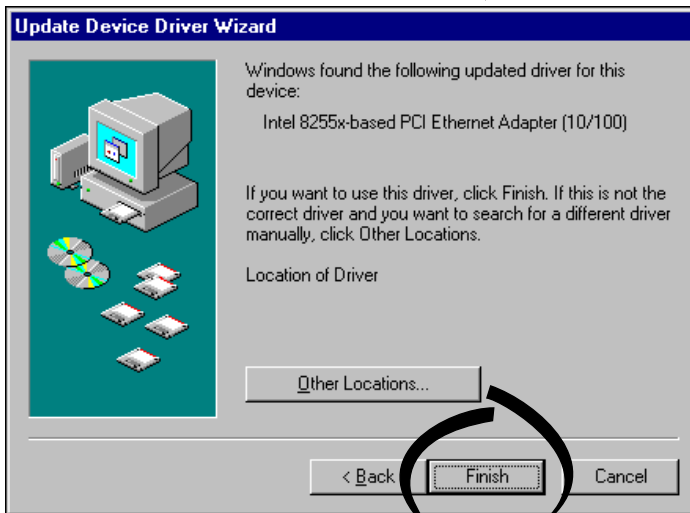
# 4

## Install the Windows 95 Driver.\*

When the Update Device Driver Wizard appears, insert the PCI/PXI Ethernet Adapters CD and let Windows search for the updated driver.



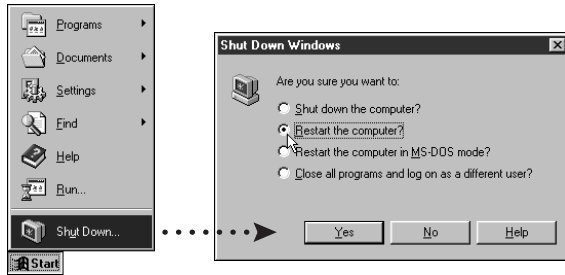
Insert PCI/PXI Ethernet Adapters CD



\* **For Help** installing your driver, refer to the *PCI/PXI Ethernet Adapters Installation Guide* (available on the PCI/PXI Ethernet Adapters CD). The installation guide also contains cabling instructions and troubleshooting tips.

# 5

**Restart computer, then connect to your network.**



# 6

**Run NI-488.2 Getting Started Wizard.**





[www.ni.com/support](http://www.ni.com/support)  
[www.ni.com/ask](http://www.ni.com/ask)

Tel: (512) 795-8248 • Fax: (512) 683-5678 • [ftp.ni.com](http://ftp.ni.com)

© Copyright 2000 National Instruments Corporation. All rights reserved. Product and company names mentioned herein are trademarks or trade names of their respective companies.



322693A-01

Jul00